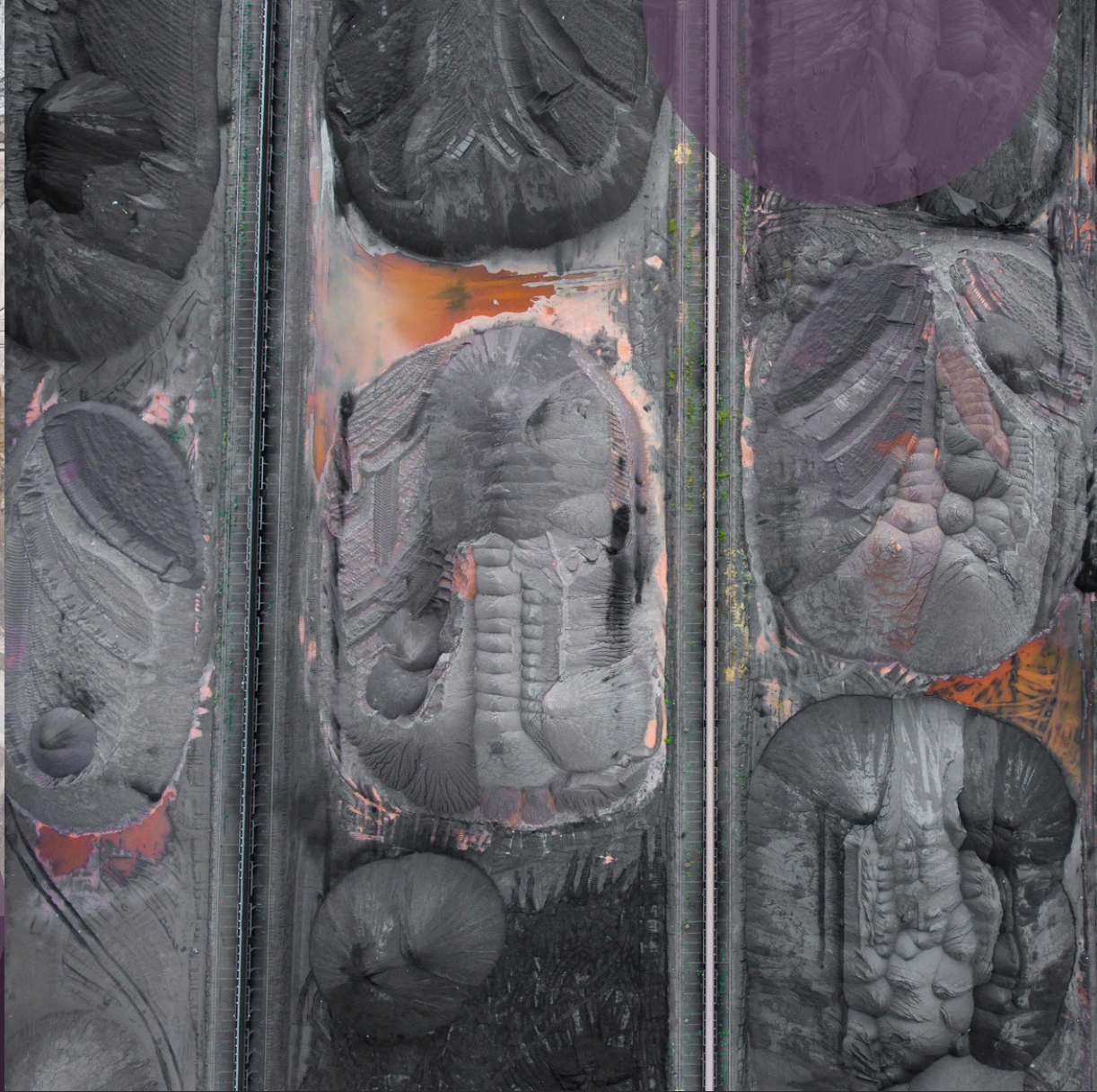




# A Land Management Solution- Framework for ESG Risk Management

THERE'S A LOT TO BE AWARE OF WHEN REQUIRING ACCESS TO LAND FOR  
YOUR DEVELOPMENT PROJECTS - BUT IT DOESN'T HAVE TO BE AS DIFFICULT  
AS YOU MIGHT ORIGINALLY THINK



**Introduction:**

1

**The Basics:**

2

**A Framework For Land Management:**

3 - 6

**What You Can Do To Make Things**

**Easier?:**

7 - 8

k2fly

# Introduction



Are you feeling more pressure than ever when it comes to managing ESG risk? Between Aboriginal Cultural Heritage concerns, environmental disasters, an increasing public consciousness for climate action, and increased ESG reporting requirements, your social license to operate has never been more at risk and in the spotlight.

However, does the problem lie with legislation and increased public scrutiny, or does the problem lie in the fact you might not have the proper tools for comprehensive land management?

k2fly

# The Basics

Things organisations must know before using land.

# 5 Considerations for organisations when using land

**All stakeholders matter**

**Build sustainable relationships**

**Manage approvals, agreements, rights, & obligations**

**Implement governance that provides transparency and helps manage risk**

**Be able to assess, survey, collect, & preserve cultural heritage knowledge in cooperation with traditional owners**

It can be difficult trying to stay on top of the things you need to responsibly manage land. If you remember these six things, it should put you on a decent path.



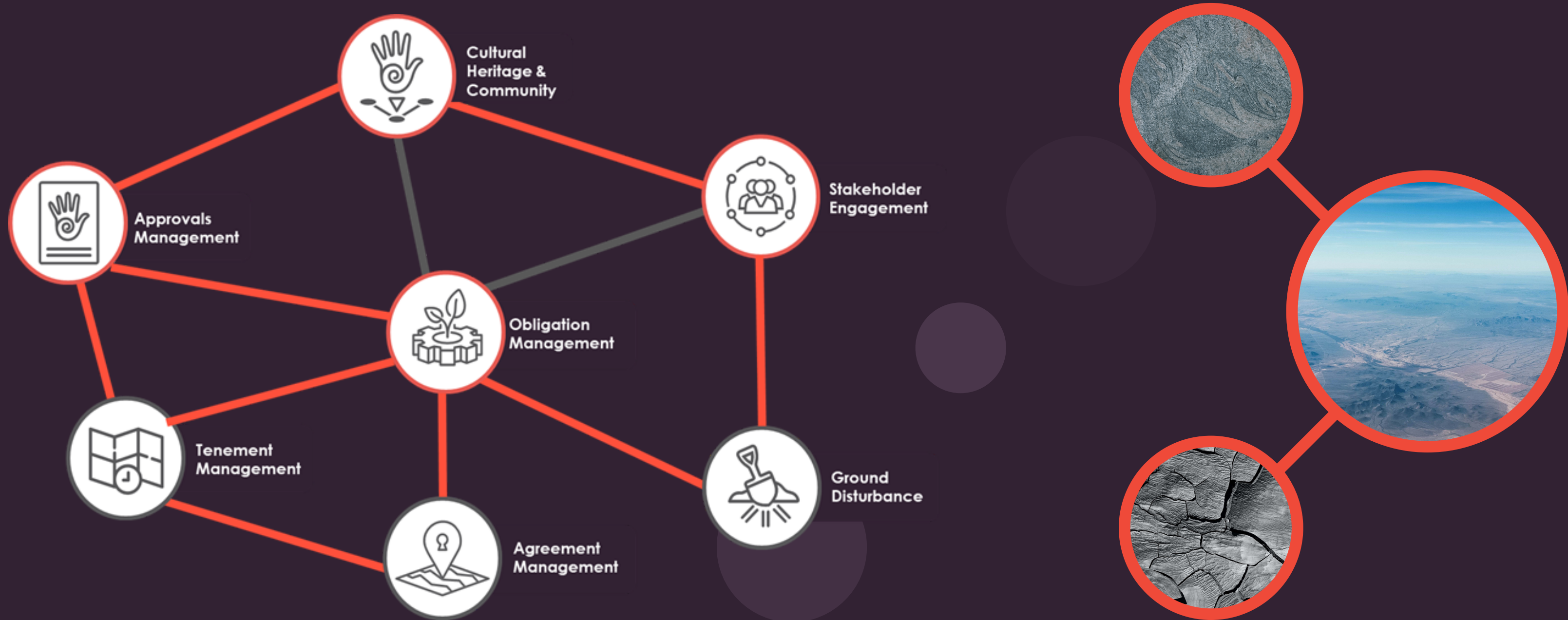
k2fly

# A Framework For Land Management

An option to try make managing your tenure easy.

# The Framework

Provide a consolidated knowledge base for all your related data. Fully spatially integrated, while the Ground Disturbance process provides transparent governance and ESG risk mitigation.





# Stakeholder Engagement

## **Open Communication:**

Effective stakeholder engagement requires clear and transparent communication. Regularly update stakeholders on project developments, potential impacts, and mitigation measures. Utilise various communication channels, such as public meetings, online platforms, and community events, to foster understanding and gather feedback.

## **Conflict Resolution:**

Address conflicts promptly and fairly by actively listening to stakeholder concerns. Implement mechanisms for dispute resolution and be prepared to adjust project plans based on stakeholder input, ensuring that concerns are addressed while upholding the project's objectives.

## **Cultural Heritage Preservation:**

Recognising and respecting the cultural heritage of the land and the rights of traditional owners is paramount. Engaging with Indigenous communities and understanding their values, practices, and connection to the land is essential. Implementing cultural heritage assessments and involving Indigenous representatives in decision-making processes can help protect and preserve heritage sites.

## **Community Collaboration:**

Building strong relationships with local communities fosters trust and ensures that your operations are aligned with community interests. Regular dialogue, public consultations, and community involvement in project planning and execution help address concerns, gather input, and establish a positive presence in the region.



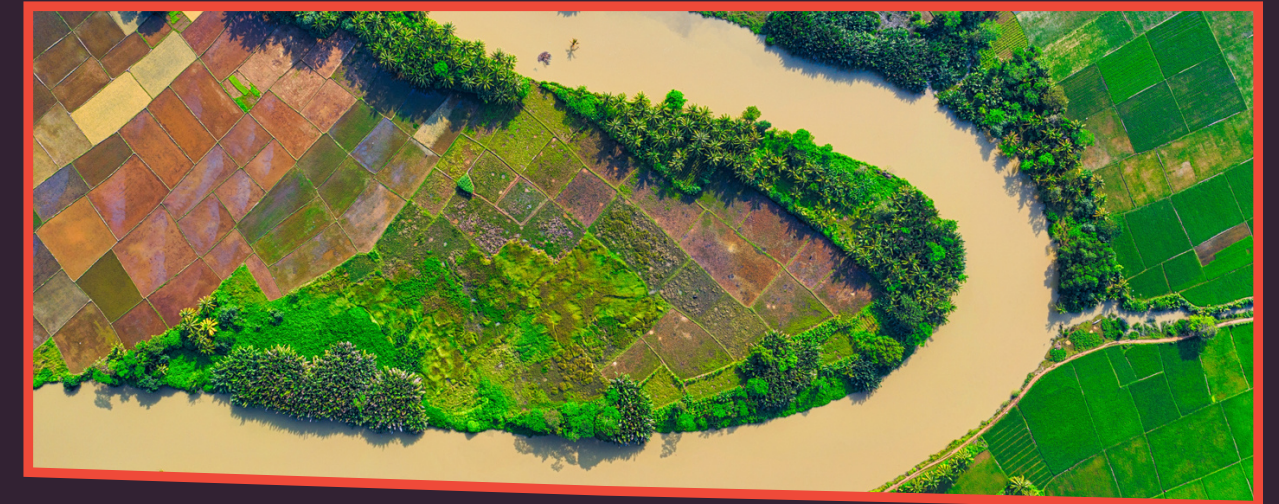
# Tenement, Approval, and Agreement Management

Continually monitor and manage tenure, approvals, and any 3rd party agreements. This includes capturing all related conditions or obligations for compliance tracking.

Clearly outline the terms of agreements with traditional owners, local communities, and other stakeholders. Ensure that legal agreements reflect mutual expectations, responsibilities, and benefits. Regularly review and update agreements to accommodate changing circumstances.

Understand and fulfill social and environmental obligations stemming from community expectations. Implement responsible practices to meet these obligations while minimising negative impacts.

Recognise that your obligations extend beyond the lifespan of a project. Develop strategies for ongoing monitoring, reporting, and accountability to ensure that your commitment to environmental and social responsibility endures.

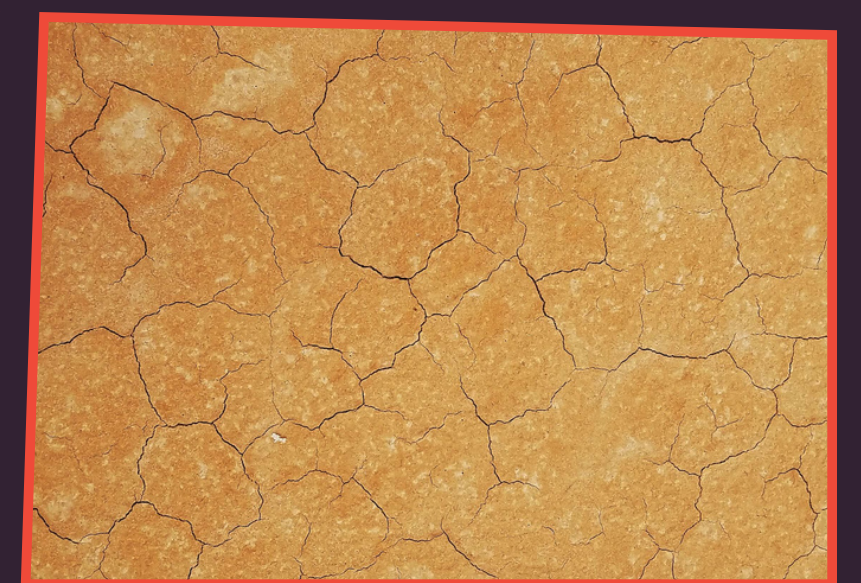
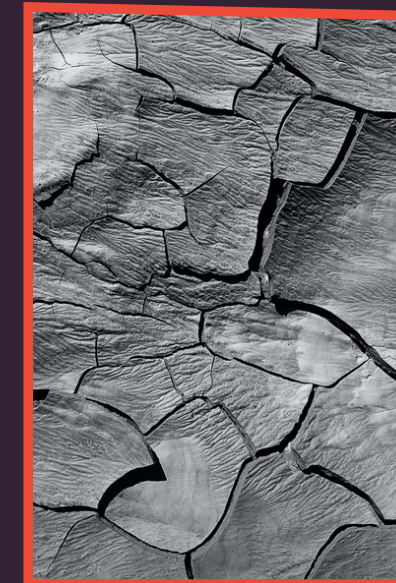
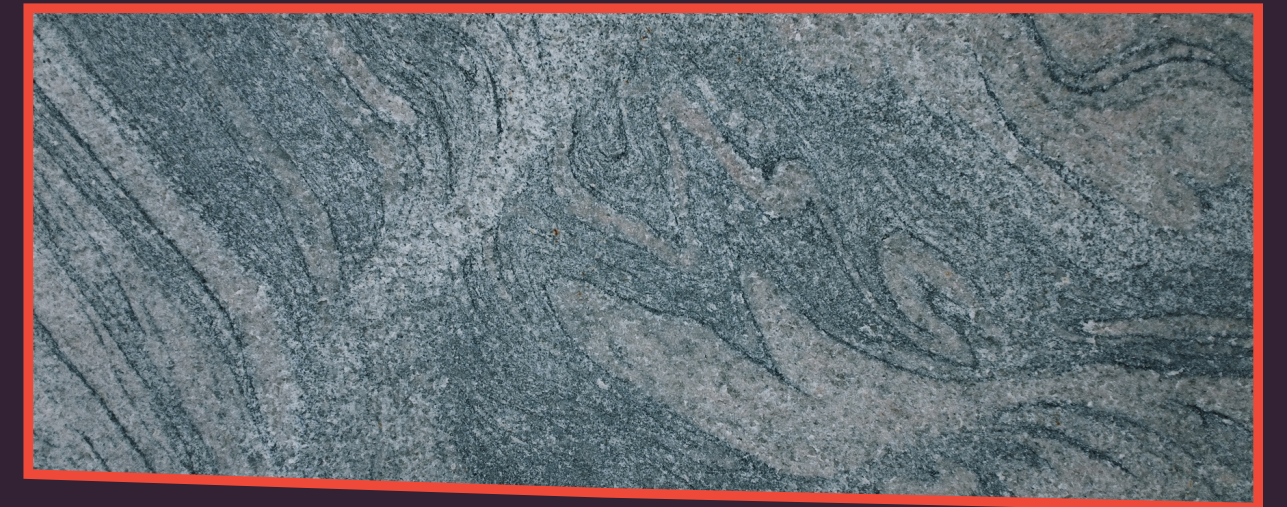


# Ground Disturbance

## **ESG Governance and Compliance:**

For any level of access or ground disturbing activity ensure all necessary Approvals are in place and relevant conditions / obligations are understood.

Monitor and verify compliance through the life of a project. Ensure each work activity is reviewed and closed out appropriately. Measure actual clearing against authorised amounts and reconcile. Regularly assess whether project activities align with established commitments and obligations. Address any deviations promptly to maintain trust and accountability.



k2fly

# What Can You Do To Make Things Easier?

Use a platform to make your job easier.

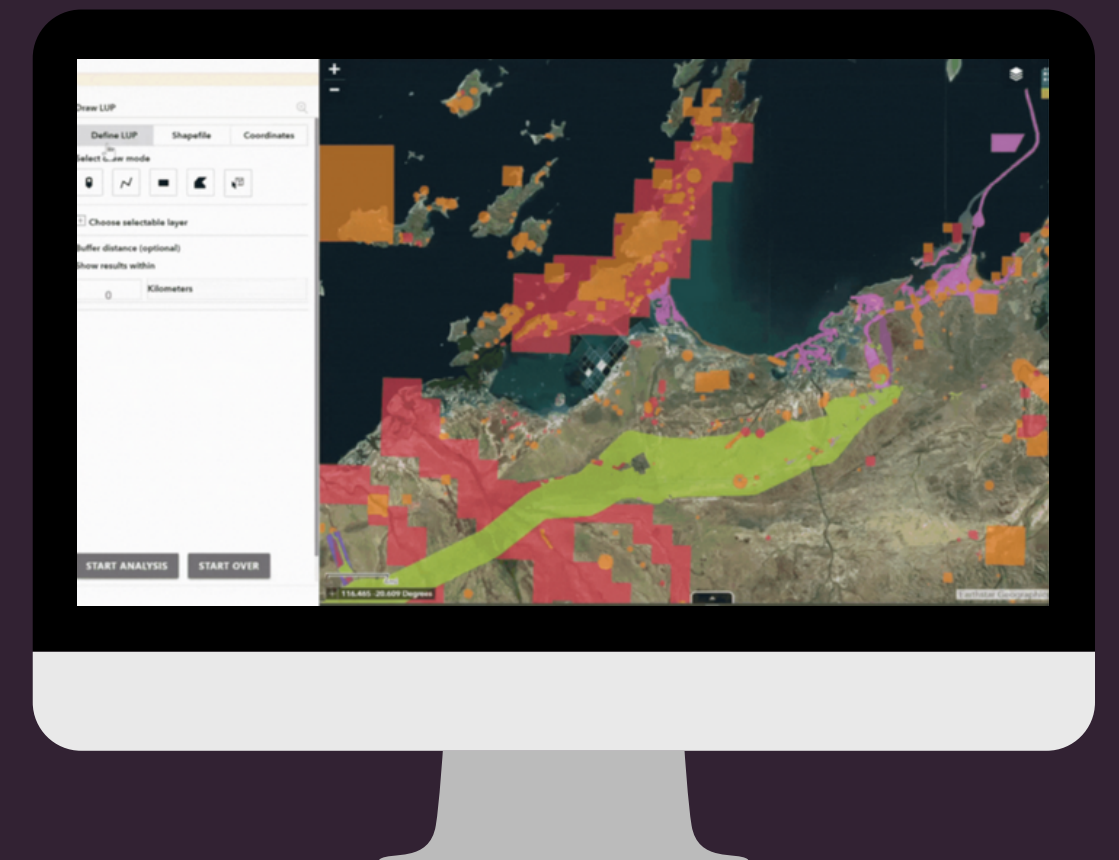
# The right platform to help implement your solution framework

K2fly's cultural Heritage Management, Land Access, and Ground Disturbance solutions are able to help you demonstrate clear governance and ESG risk management.

Keep all the data that you need for land tenure, approvals, agreements, and related obligations in in a corporate knowledge base and standard platform. Record relevant key stakeholder interactions and manage land access and ground disturbance activity with transparency and efficiency.

With our solution, you can:

- Manage stakeholder inclusion.
- Record stakeholder interactions and events.
- Manage Heritage surveys, consultation, and assessment activity.
- Capture cultural heritage knowledge, tangible and intangible, by location.
- Manage related agreements and obligations.
- Integrate with publicly available data sets – e.g., tenement and tenure boundaries, Native Title Areas, environmentally sensitive areas etc.
- Respect cultural protocols for data access.
- Create extended relationships between data items dynamically.
- Work in a fully spatially integrated environment
- Attach documents or multimedia files to related items.



# K2fly Land Management Solution





k2fly

Resource Governance solutions  
for net positive impact

Get in contact with our team and find out how  
we can solve the issues you're having today.